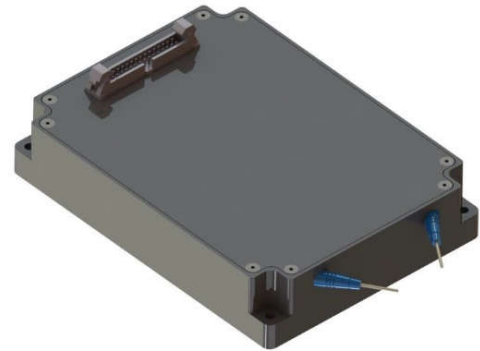


Model Number: **EDFA-CW-PM-RS-CLO-30-27-FCA**

Product Code: **1826**

Micro Processor Controlled EDFA



Specifications:

Parameters	Specifications
Wavelength Range	1535 – 1563nm C-band and 1570 – 1605nm L-band
Polarization Maintaining Property	Provided. Optical signal: slow axis light is amplified; fast axis light is blocked
Gain Flattening Filter	Not included
Output Power	+27 dBm in C-band and +27 dBm in L-band
Gain	27 dB, tested with 1550 nm / 0 dBm input, and 1590 nm / 0 dBm input
Optical Input Fiber	900um loose tube, FC/APC, blue, 1 meter, PM fiber PN: SM15-PS-U25D
Optical Output Fiber	900um loose tube, FC/APC, red, 1 meter, PM fiber PN: SM15-PS-U25D
Input Power Monitoring Range	-10 dBm to +10 dBm at C and L band, independent
Output Power Monitoring Range	+10 to +28 dBm at C and L band, independent
Input Power Measurement Accuracy	≤ +/- 0.5 dB, 1550 nm / 1590 nm
Output Power Measurement Accuracy	≤ +/- 0.5 dB, 1550 nm / 1590 nm
Polarization Extinction Ratio	≥ 20 dB
Control and Communication Interface	RS-232, LVTTTL voltage level
Dimension	127 x 94 x 25mm
Power Input	+12 VDC +/- 5%
Electrical Interface Connector	PN: ASP202700-01, male 30-PIN
Operational Case Temperature Range	0 to +50°C
Mode of Operation	AOPC (constant output power control), ACC (constant pump current control)

ERBIUM DOPED FIBER AMPLIFIER



Electrical connector:

Part number: ASP202700-01

Pin No	Description	Pin No	Description
1	+12V	2	+12V
3	-	4	-
5	GROUND	6	GROUND
7	RS232 TX	8	RS232 RX
9	GROUND	10	GROUND
11	EDFA RESET LVTTTL	12	-
13	EDFA POWER MUTE LVTTTL	14	EDFA INTERLOCK LVTTTL
15	GROUND	16	EDFA CASE TEMP ALARM LVTTTL
17	EDFA PUMP CUR ALARM LVTTTL	18	EDFA PUMP TEMP ALARM LVTTTL
19	EDFA LOSS OUTPUT POWER LVTTTL	20	EDFA LOSS INPUT LVTTTL
21	-	22	-
23	GROUND	24	GROUND
25	GROUND	26	GROUND
27	+12V	28	Controller Health pulse
29	+12V	30	+12V



Proprietary Information of Nuphoton Technologies
Manufactured in the USA